



THE  
**Foundation**

Champlain Valley Physicians Hospital

# Connecting You

## UPCOMING EVENTS

### Abbott & Coffey Golf Tournament

June 1

Adirondack Golf & Country Club

### Setting Sail

June 9

Plattsburgh City Marina

### Annual Remembrance Ceremony

June 20

Circle of Healing & Hope

### Mayor's Cup Bike Ride

July 8

Starts at Whiteface Mountain

For information about our upcoming events, contact Michelle Senecal at (518) 314-3359 or [msenecal@cvph.org](mailto:msenecal@cvph.org) or visit our website at [UVMHealth.org/CVPHFoundation](http://UVMHealth.org/CVPHFoundation)

## Our Mission

*Connecting your generosity to improve health and wellness in our region. All donations stay in our local community.*

**For a full listing of our 2017 donors, visit [UVMHealth.org/CVPHFoundation](http://UVMHealth.org/CVPHFoundation)**

Check us out on Social Media:

 The Foundation of CVPH

 [cvphfoundation](https://www.instagram.com/cvphfoundation)

 The Foundation of CVPH

 [@cvphfoundation](https://twitter.com/cvphfoundation)

 [Foundation.cvph](https://www.snapchat.com/add/cvphfoundation)

## You Are Improving Our Community

### Donations in 2017 made big impact on our region

It's amazing what can be accomplished when we work together. In this past year, your donation has been able to touch so many lives and we've seen how working together can come in many different forms. As the philanthropic arm of CVPH, we have the opportunity to partner with you to turn your gift into something that will touch a life. Our donors work together to combine their efforts so we can improve the health of many people in our community. The Foundation Board identifies partners to improve health and wellness in our region.

Although our fiscal year is October 1 to September 30, we like to use the calendar year as a marker to show the impact that your gift has on people in our community. We're dedicating this newsletter to recapping highlights from 2017 and sharing information about how you have impacted our patients, our people and our community. Inside, you'll see how your dollars have been invested within the hospital and outside hospital walls.



Your support of The Foundation of CVPH is perhaps farther reaching than you could imagine. Thank you for making a difference.

*Kerry Haley, Foundation Associate Vice President*

## CVPH Health Home & NAMI CV Project

### A small grant multiplies

Last year, the Foundation Board of Directors granted \$3,402 in funding for a joint pilot project lead by the National Alliance on Mental Illness (NAMI). Our local NAMI organization utilizes peer support/mentoring to assist individuals struggling with mental wellness.

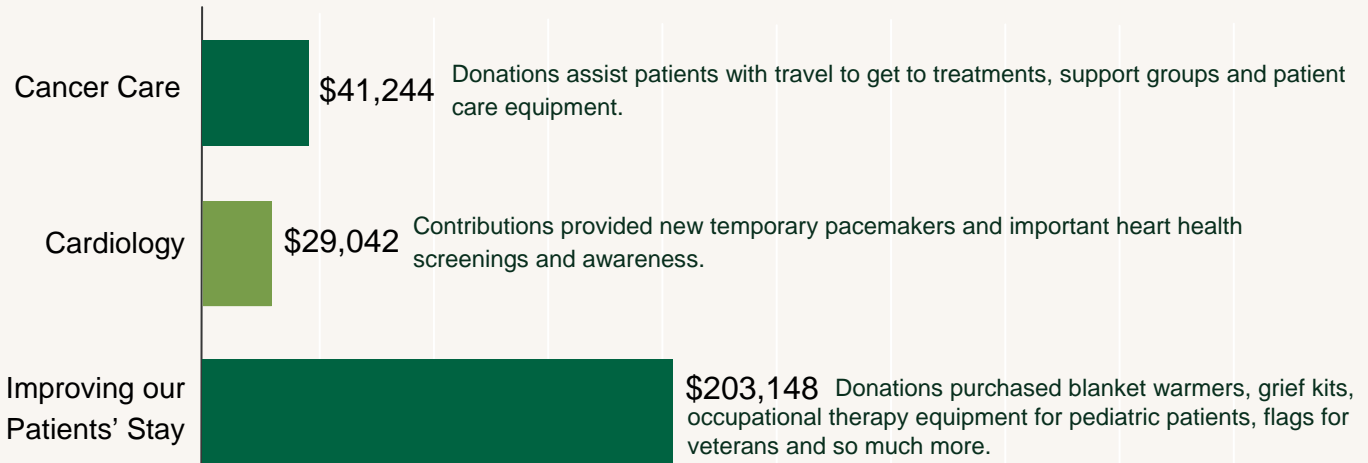
The project focused on high utilizers of the CVPH Emergency Department who had social challenges or who would be better cared for in a primary care setting where they could receive ongoing preventive care. There were 34 patients that were part of the program. Their needs included transportation, mental health and substance abuse counseling, nutrition, housing, safety and health insurance. With counseling and support provided by the grant, 13 patients had no ED visits within a three-month period, and eight had only one to two visits—this was a significant reduction when comparing pre and post program statistics.

The grant provided greater quality of life for patients served by the project, enhanced communication between providers and their patients, decreased ED visits, generated Medicaid savings, and the pilot results solidified funding through Adirondack Health Institute (an organization that disburses Medicaid funds) for \$150,000 to continue this program by supporting a full time community resource navigator and a full time peer advocate in the Emergency Department.

# Your Impact within our Hospital

You are making care at CVPH the best it can be

This chart is an overview of where your support was invested within the hospital this past year. There are so many Foundation-supported programs that are making an impact on our patients, people and community—we couldn't wait to share some highlights with you.



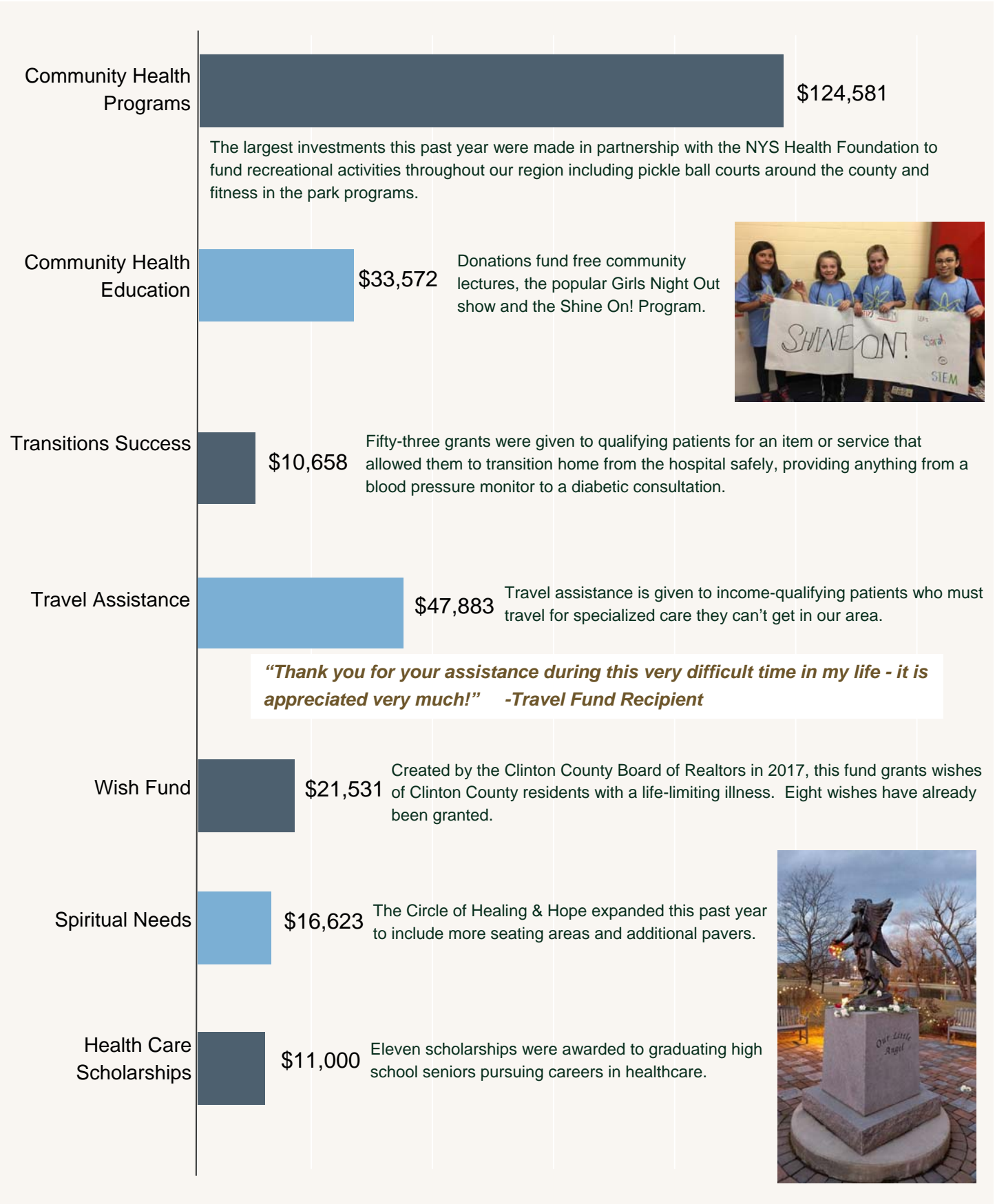
One proposal we supported was a flag program to show respect to our veterans. The picture to the right shows veterans Joe Patnode of Facilities, Dale Wells from EMT of CVPH and Dan Lee of the ICU with special magnets that are placed outside a veteran's doorway when they are a patient. Veterans also receive a small flag for their nightstand and a note of thanks from staff. The appreciation from patients and their families has been heartwarming.

\*You can see that a large majority of support was given to the Family Medicine Residency - This is in thanks to special support from the William H. Miner Foundation and other special donors, such as *the George & Shirley Moore Foundation, W. B. Mason, the Charles R. Wood Foundation, Hannah & Michael Antkowiak, John Schmitt & Bonnie Pellerin, Della Auto Group, Mold-Rite Plastics, PC Construction, and Stewart's Shops*. This June, the program will expand from four to six resident for every incoming class.

# Your Impact within our Community

## You are improving lives throughout our region

Along with support of the hospital, The Foundation invests approximately 25% of its budget outside of the hospital walls - looking to improve the health of our community. Our Board of Directors often partners with strong community agencies to implement programs that will have a positive outcome on health and wellness in our region.



75 Beekman Street  
Plattsburgh, NY 12901

*To be added to or deleted from our mailing list, please call (518) 562-7169.*

Non-Profit Org.  
U.S. Postage  
PAID  
Plattsburgh, NY  
Permit No. 100

FOUNDATION OF CVPH NEWS | ISSUE 2 — WINTER/SPRING 2018

FOUNDATION OFFICE

This newsletter is produced on a semi-annual basis and sent by mail. If you would prefer to receive this newsletter by email, please send your email to [kkalman@cvph.org](mailto:kkalman@cvph.org)

FOUNDATION STAFF

Kerry Haley  
EXECUTIVE DIRECTOR  
[khaley@cvph.org](mailto:khaley@cvph.org)

Sarah Hardy  
MANAGER OF VOLUNTEER SERVICES  
[shardy@cvph.org](mailto:shardy@cvph.org)

Karen Kalman  
DEVELOPMENT ASSISTANT  
[kkalman@cvph.org](mailto:kkalman@cvph.org)

Michelle Senecal  
EVENTS & SPECIAL PROJECTS MANAGER  
[msenecal@cvph.org](mailto:msenecal@cvph.org)

## Medication Collection Bin

In December, The Foundation of CVPH Board of Directors provided initial funding for a community medication collection bin that is located in the CVPH Outpatient Pharmacy. The Outpatient Pharmacy joins the Clinton County Sheriff's Department and Plattsburgh City Police to provide a safe location to dispose of unused medications. Periodically, retail pharmacies will also conduct special drop off events. The intent is to remove unused controlled medications, especially opioids, from our community.

Within the first 97 days of use, the 38-gallon bin needed to be emptied four times! That's over 150 gallons of unused and unwanted medications that are already out of our community.

Please take advantage of this free service by cleaning out your medicine cabinet.

